






AG05/11-27 Cliff Road Epping NSW

3  2  2 

This spacious 3 bedroom apartment is positioned within a well-established and peaceful complex in a highly sought Locale. Situated on the quiet street with a generous floorplan, this perfect-maintained apartment offers area views and modern contemporary features throughout.

Features:

- Superbly appointed for indoor and outdoor living space
- Open living and dining space filled with natural light
- Oversized balcony enjoys leafy outlook and northern sun
- Gas kitchen featuring stone benchtops and Miele appliances
- 3 spacious bedrooms, master with walk in wardrobe
- Two luxurious modern bathrooms including en-suite to master
- Excellent appeal for first home buyers, growing family,

Building Size : 185 sqm

View

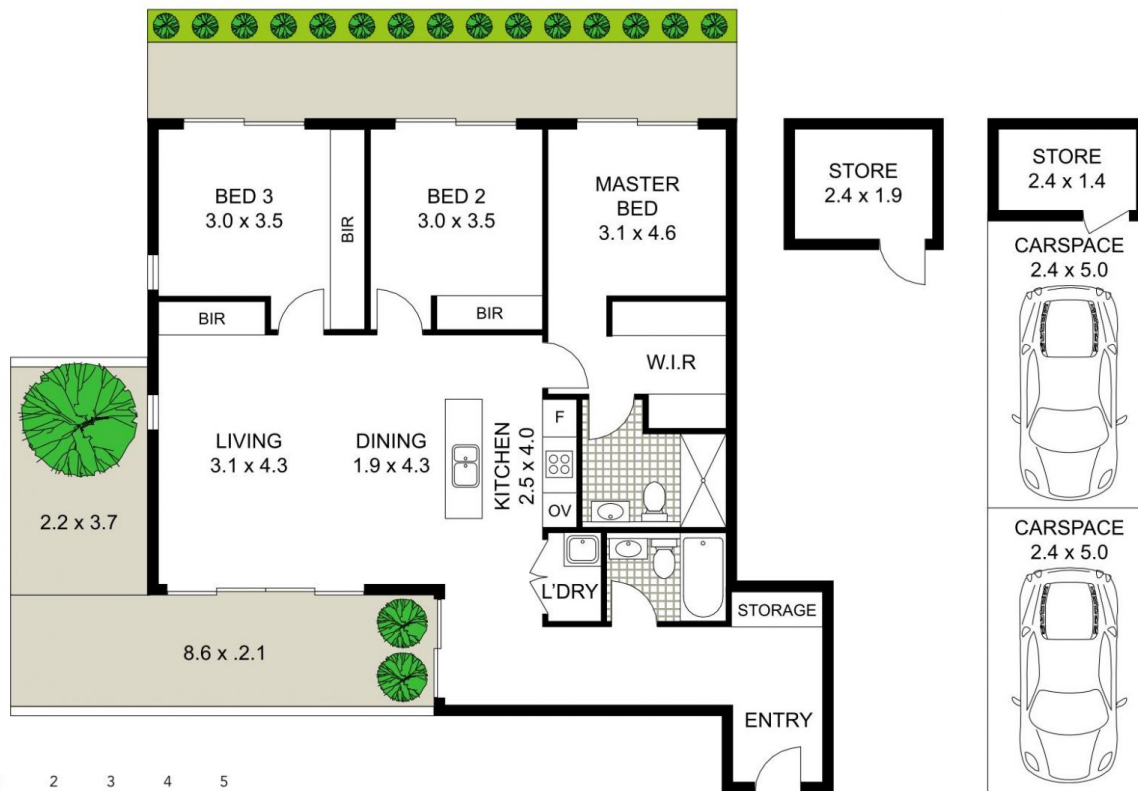
: <https://www.uniland.com.au/sale/nsw/northern-suburbs/epping/residential/apartment/6909436>



Andy Lin
02 9869 7788



Kris Yu
02 9869 7788



0 1 2 3 4 5

Scale in metres. Indicative only. Dimensions are approximate.

DISCLAIMER: PLANS SHOWN ARE FOR MARKETING PURPOSES ONLY. ALL DIMENSIONS ARE APPROXIMATE AND NOT TO SCALE. THEY ARE SUBJECT TO ERRORS AND INACCURACIES AND NO LIABILITY WILL BE ACCEPTED. INTERESTED PARTIES SHOULD MAKE THEIR OWN INQUIRES.

AG05,11-27 Cliff Road, Epping

