




## 8 Damon Avenue Epping NSW

5  5  2 

Flawlessly executed to perfection, this home surprises and delights at every turn with the highest quality fixtures, fittings and finishes.

Ideally in architecture, "form follows function." In this imposing ultra-modern home, the spectacular forms all flow from the needs & activities of the family inside. This brings comfort and joy. Family desires like enough light and hanging space in each bedroom have been generously met. Functional requirements like a formal space near the entrance have also been met, leading to a complex outer form.

The location is also excellent with Epping West Public School, Shops and Trains all within walking distance.

### Main Features

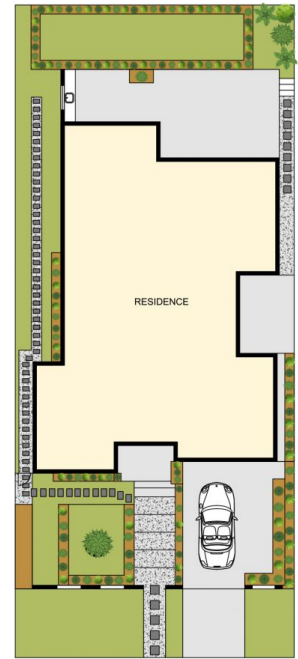
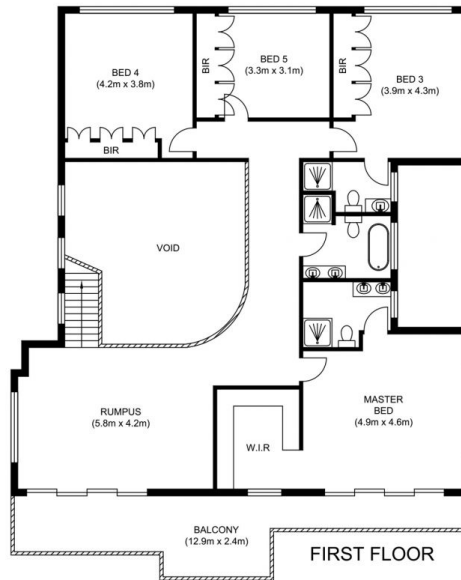
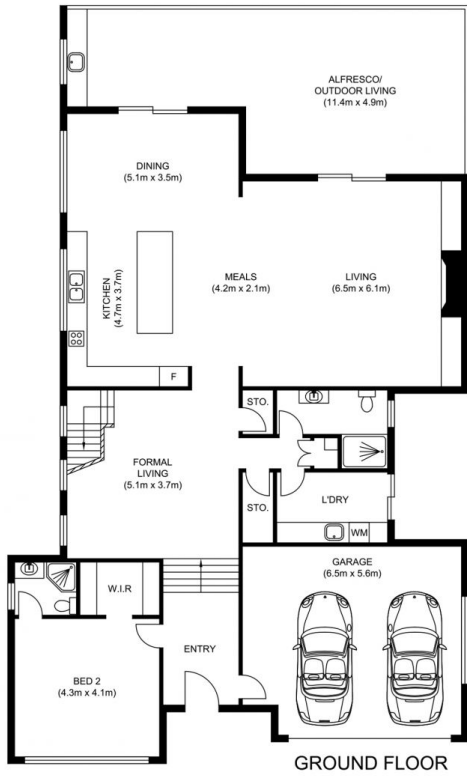
**Price** : \$ 4,500,000  
**Land Size** : 696 sqm  
**View** : <https://www.uniland.com.au/sale/nsw/northern-suburbs/epping/residential/house/6773792>



**Andy Lin**  
02 9869 7788



**Karen Ge**  
02 9869 7788



0 1 2 3 4 5  
Scale in metres. Indications only. Dimensions are approximate.



**DISCLAIMER:** PLANS SHOWN ARE FOR MARKETING PURPOSES ONLY, ALL DIMENSIONS ARE APPROXIMATE AND NOT TO SCALE. THEY ARE SUBJECT TO ERRORS AND INACCURACIES AND NO LIABILITY WILL BE ACCEPTED. INTERESTED PARTIES SHOULD MAKE THEIR OWN INQUIRES.

8 Damon Avenue, Epping

