

57/13-19 Pastoral Circuit Pemulwuy NSW

2  2  1 

Beautifully presented with fresh paint and near new flooring throughout, this garden feel contemporary ground floor apartment is situated in a boutique secured building in the heart of Pemulwuy. Boasting an oversized air-conditioned living area adjoining north facing courtyard and private yard at the back, this gorgeous home enjoys excellent air-flow with high ceilings, quality finishes and is designed for someone looking for a low maintenance and spacious living both indoor and outdoor.

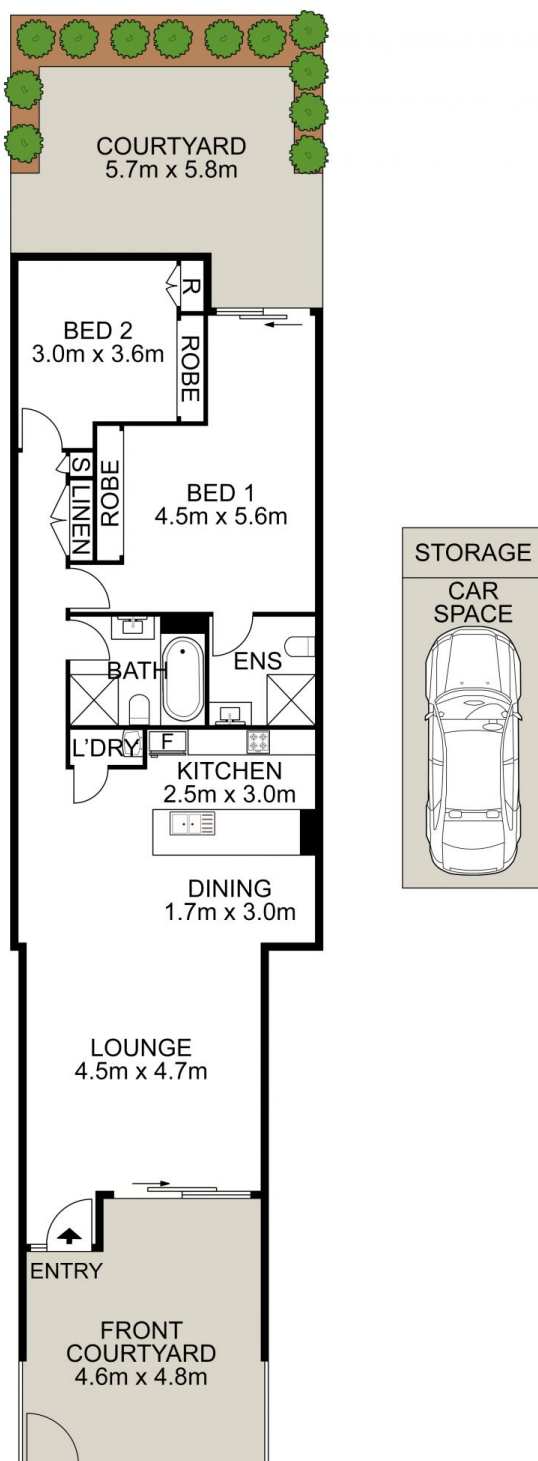
Main Features:

- Generous in proportion combined living and dining room leading out to north facing courtyard
- Near new floorboards, fresh new paint and light fittings.
- Fully equipped sleek kitchen with gas stainless steel cooking, Caesar stone bench tops and dishwasher

Price : \$ 630,000
Building Size : 165 sqm
View : <https://www.uniland.com.au/sale/nsw/parramatta/pemulwuy/residential/apartmen/6760509>



Annie Zeng
02 9869 7788



57/13-19 Pastoral Circuit, Pemulwuy

DISCLAIMER:

PLANS SHOWN ARE FOR MARKETING PURPOSES ONLY, ALL DIMENSIONS ARE APPROXIMATE AND NOT TO SCALE. THEY ARE SUBJECT TO ERRORS AND INACCURACIES AND NO LIABILITY WILL BE ACCEPTED. INTERESTED PARTIES SHOULD MAKE THEIR OWN INQUIRES.

