



**22 Fullford Street Dundas Valley NSW**

5 🛏 3 🚿 2 🚗

Peacefully nestled opposite the lush green lawns of Dundas Park, this beautifully presented contemporary home boasts generous proportions and flowing interiors throughout

Spacious sized and ideally stylish, this magnificent residence provides low-maintenance lifestyle ideal for the 1st home buyers or a growing family to enjoy for the years to come

**Main Features:**

- \*Large duplex with 422 sqm (approx.) land on the high side of the quiet street
- \*Generous 5 bedroom all appointed with built-in wardrobe
- \*Master bedroom with En-suite and walk in wardrobes and balcony access

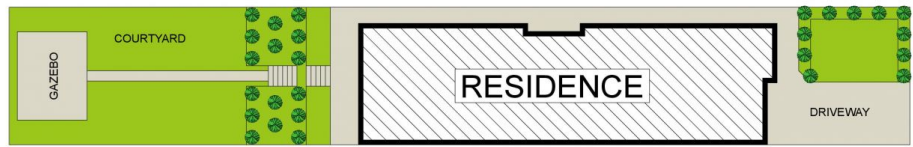
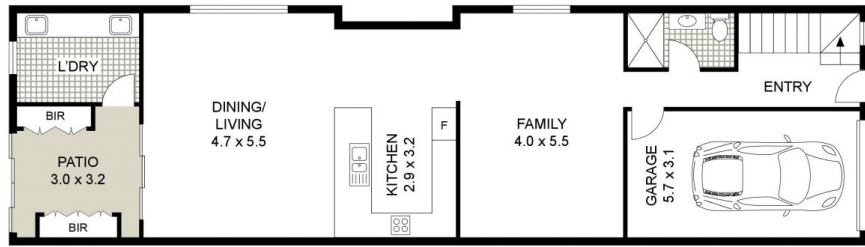
**Price** : \$ 1,600,000  
**Land Size** : 422 sqm  
**View** : <https://www.uniland.com.au/sale/nsw/northern-suburbs/dundas-valley/residential/semi-detached/6742018>



**Andy Lin**  
02 9869 7788



**Kris Yu**  
02 9869 7788



0 1 2 3 4 5  
 Scale in metres. Indicative only. Dimensions are approximate.

DISCLAIMER: PLANS SHOWN ARE FOR MARKETING PURPOSES ONLY, ALL DIMENSIONS ARE APPROXIMATE AND NOT TO SCALE. THEY ARE SUBJECT TO ERRORS AND INACCURACIES AND NO LIABILITY WILL BE ACCEPTED. INTERESTED PARTIES SHOULD MAKE THEIR OWN INQUIRES.



22 Fullford Street, Dundas Valley

