



2602/11 Hassall Street Parramatta NSW

2  2  1 

Situated on level 26 of this landmark building "Skyrise" at heart of Parramatta CBD, this stunning executive two bedroom apartment will impress you with its state of art finishes throughout and sweeping view overlooking the City and the best view Parramatta and surroundings has to offer.

Living in this superb residence, you are immersed in its abundant natural light, magnificent view and ultra convenience every day. Everything you can think of, schools, transportation, shopping and entertainment, restaurants, stadium, parks are ALL within minutes walk.

Main Features:

- Open-plan living/dining with uninterrupted panoramic views via floor-to-ceiling windows.
- Modern gas kitchen with stone benchtops & stainless

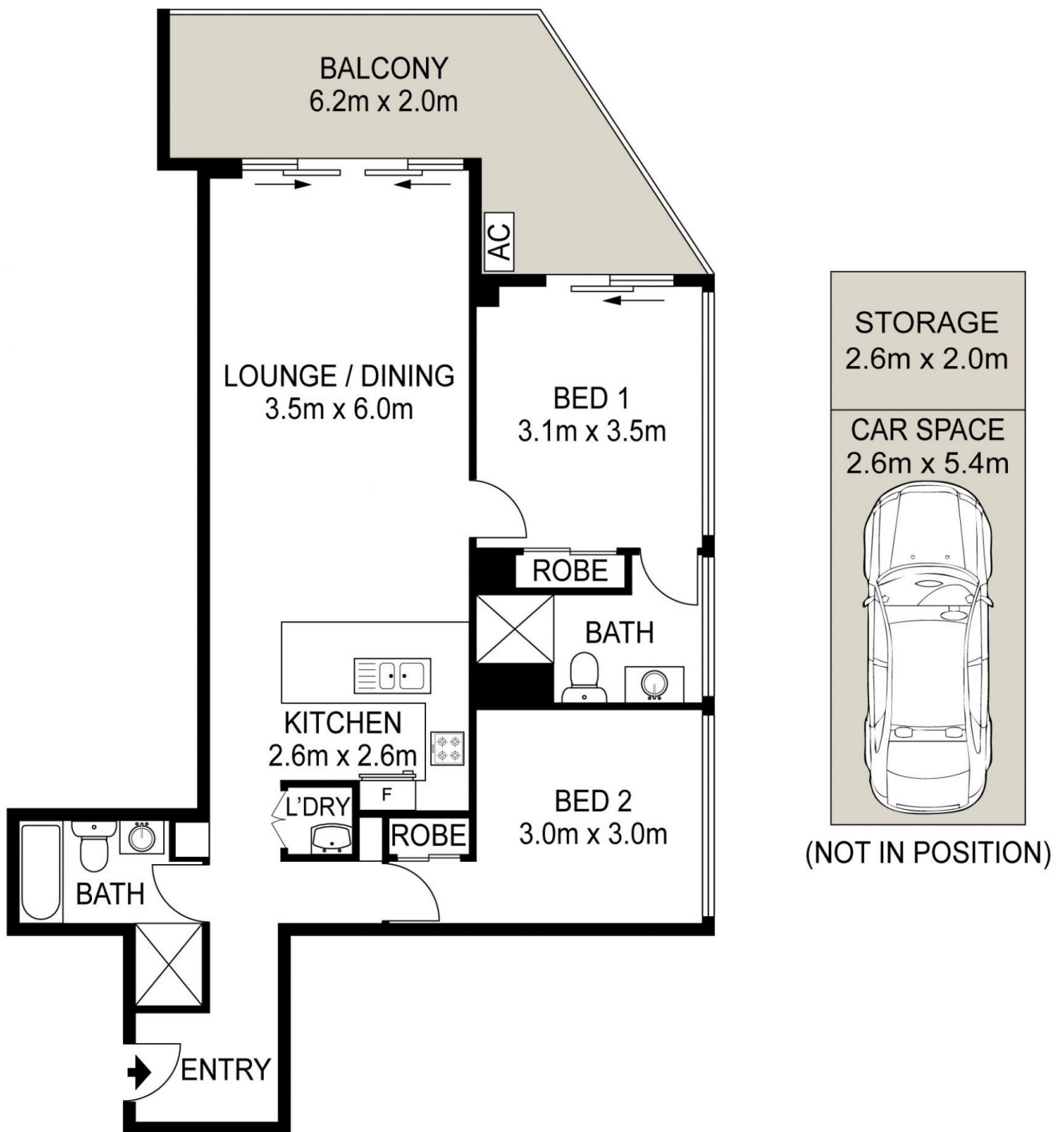
Price : \$ 750,000
Building Size : 104 sqm
View : <https://www.uniland.com.au/sale/nsw/parramatta/parramatta/residential/apartment/6688421>



Andy Lin
02 9869 7788



Annie Zeng
02 9869 7788



2602/11 Hassall Street, Parramatta

DISCLAIMER

PLANS SHOWN ARE FOR MARKETING PURPOSES ONLY, ALL DIMENSIONS ARE APPROXIMATE AND NOT TO SCALE. THEY ARE SUBJECT TO ERRORS AND INACCURACIES AND NO LIABILITY WILL BE ACCEPTED. INTERESTED PARTIES SHOULD MAKE THEIR OWN INQUIRES.