






2/53 Kirkham Road Auburn NSW

3  2  1 

Quietly yet conveniently positioned in a well maintained complex at a prime locale within minutes to Berala and Lidcome Town Center, this contemporary and spacious home has been well designed to maximise natural light, space and comfort. A perfect home for first home buyers, growing families or astute investors.

Land Size : 175 sqm
View : <https://www.uniland.com.au/sale/nsw/parra-matta/auburn/residential/townhouse/6686786>

Main Features:

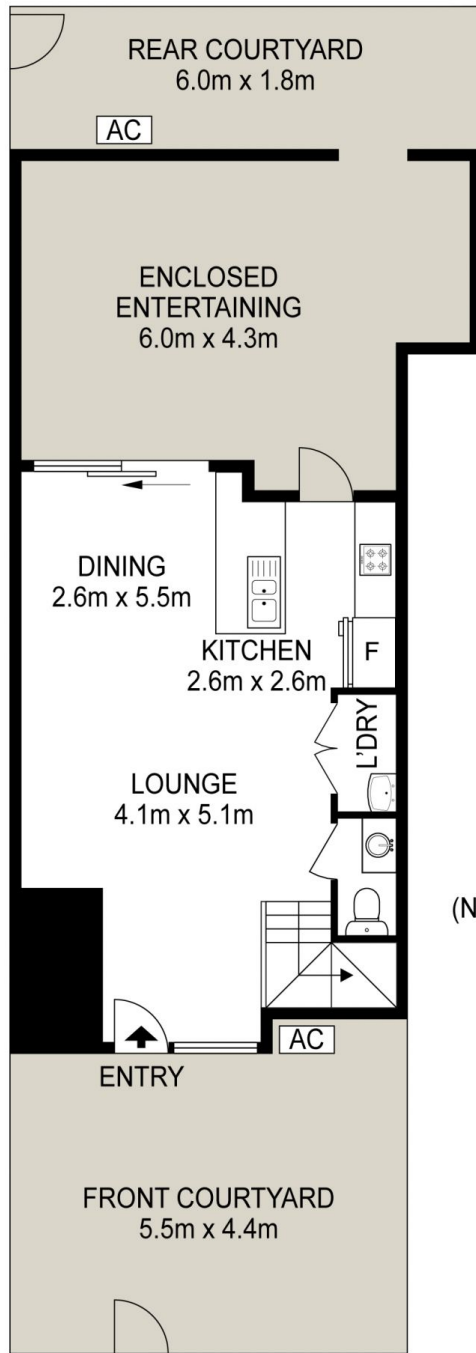
- *Bright and breezy open living and dining space that leads to the rear court yard
- *Well proportioned layout spreading over 3 levels of contemporary living
- *Modern gas kitchen with stone benchtop and quality appliances
- *Three large bedroom, master with walk-in wardrobe, ensuite & balcony,



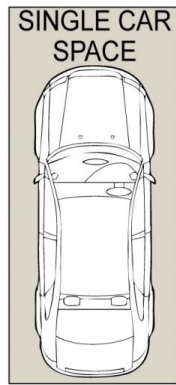
Andy Lin
02 9869 7788



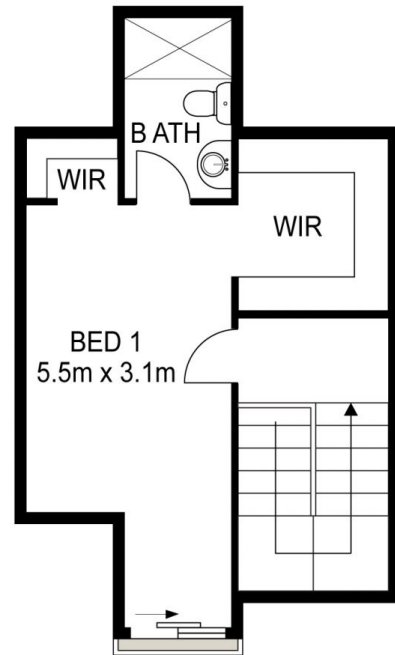
Karen Ge
02 9869 7788



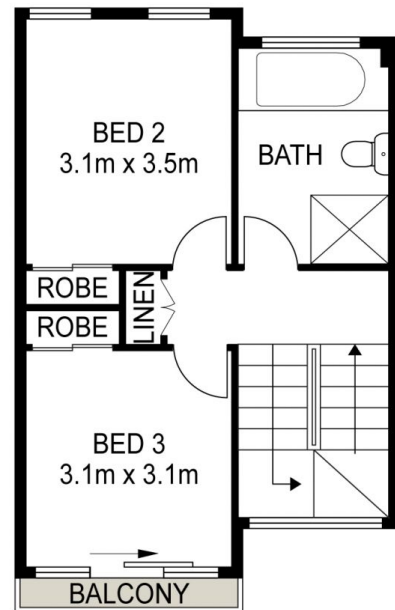
GROUND FLOOR



(NOT IN POSITION)



SECOND FLOOR



FIRST FLOOR

2/53 Kirkham Road, Auburn

DISCLAIMER

PLANS SHOWN ARE FOR MARKETING PURPOSES ONLY, ALL DIMENSIONS ARE APPROXIMATE AND NOT TO SCALE. THEY ARE SUBJECT TO ERRORS AND INACCURACIES AND NO LIABILITY WILL BE ACCEPTED. INTERESTED PARTIES SHOULD MAKE THEIR OWN INQUIRES.