



22 Broughton Street Old Guildford NSW

5  3  2 

Nested on a prime 518 sqm low-maintenance block within one of the suburbs' most sought-after locale with walking distance from primary school and a short stroll to transport, this stunning & contemporary double brick home offers unique flexibility for a large or growing family.

Immaculated presented and well maintained, this superb residence boasts sun-drenched & spacious interiors, modern open plan gas kitchen and a selection of living/dining zones, covered outdoor entertaining area, easy-maintenance yard and plenty of parking for all your cars and boat

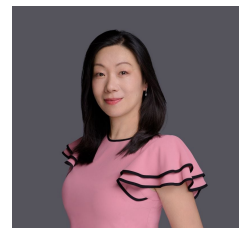
Main Features:

- * Large elegant formal lounge & formal dining
- * Extra large kitchen with 5 gas cook-top & breakfast bar

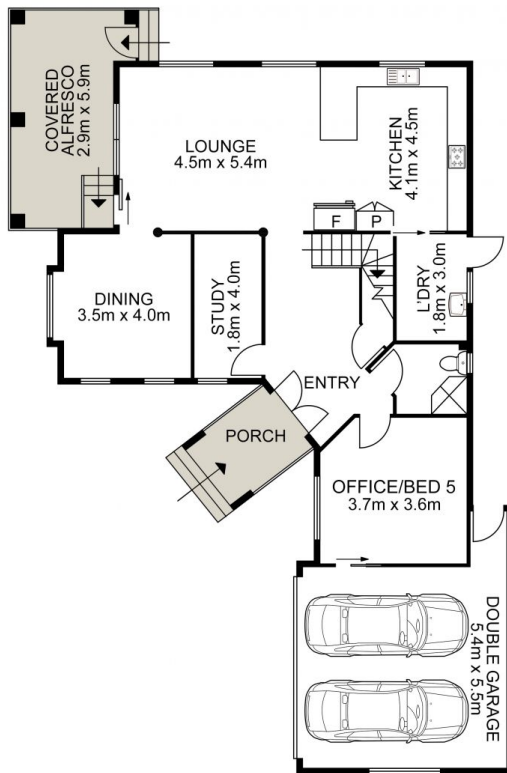
Price : \$ 1,110,000
Land Size : 518 sqm
View : <https://www.uniland.com.au/sale/nsw/parra-matta/old-guildford/residential/house/6686702>



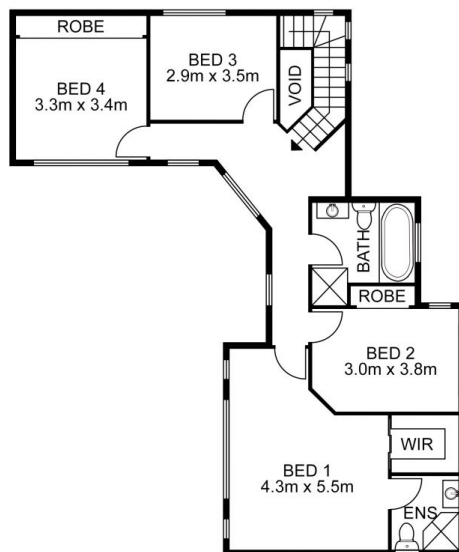
Andy Lin
02 9869 7788



Julie Zhang
02 9869 7788

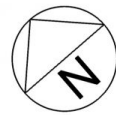


GROUND FLOOR



FIRST FLOOR

22 Broughton Street , Old Guildford



SITE PLAN

DISCLAIMER:

PLANS SHOWN ARE FOR MARKETING PURPOSES ONLY, ALL DIMENSIONS ARE APPROXIMATE AND NOT TO SCALE. THEY ARE SUBJECT TO ERRORS AND INACCURACIES AND NO LIABILITY WILL BE ACCEPTED. INTERESTED PARTIES SHOULD MAKE THEIR OWN INQUIRES.