



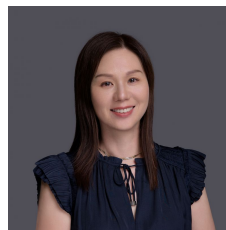
22/9-15 Lloyds Avenue Carlingford NSW

2 2 1

Nestled in one of the most sought after addresses in Carlingford, this magnificent resort style living unit offers supreme quality, security, comfort and convenience

View : <https://www.uniland.com.au/lease/nsw/northern-suburbs/carlingford/residential/apartment/6657434>

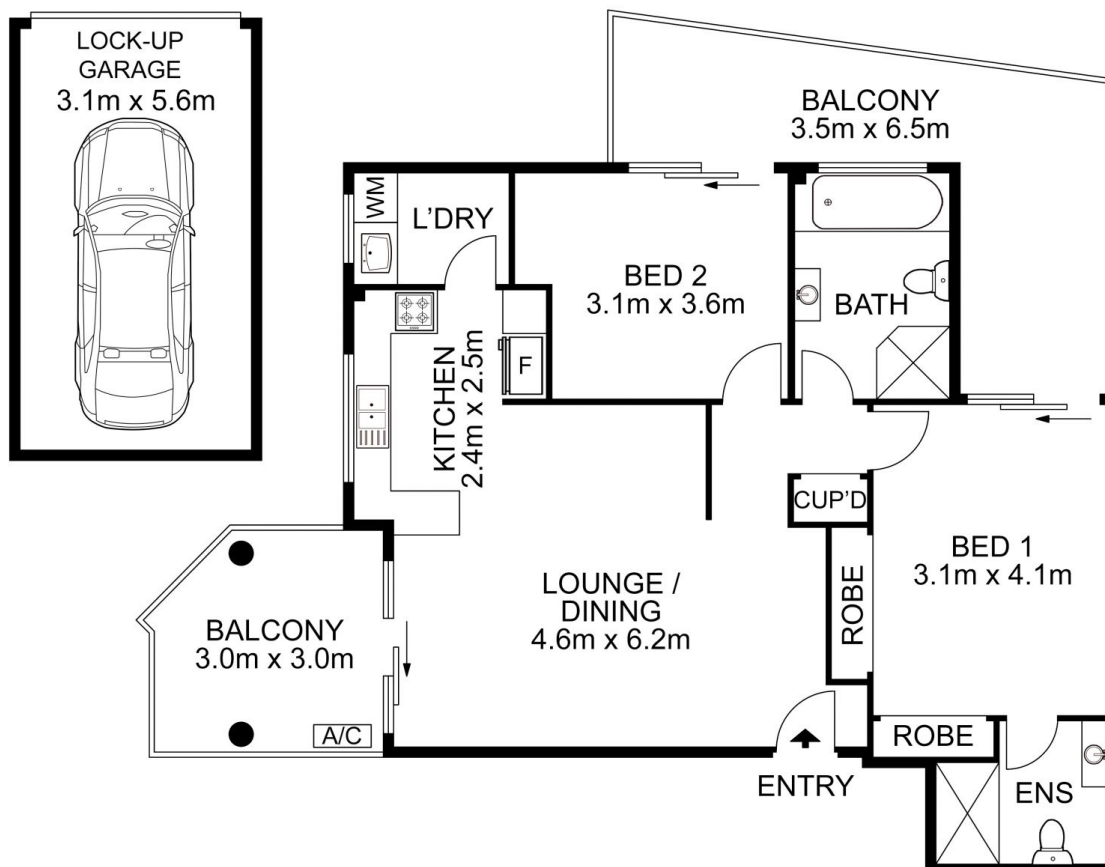
This beautiful and quiet 2-bedroom, 2-bathroom unit is in a security building in the catchment area of Carlingford West Primary School. Located within only minutes' walk of all major transport options including upcoming Carlingford Light Rail and bus services. Carlingford Court and Village are a short stroll away. Easy driving access to Parramatta or M2 direct to the City.



Sunny Tang
0409 667 888

Features include:

- Spacious open plan lounge and dining area;
- Modern kitchen with granite bench tops, stainless steel appliances and gas cooking;



22/9-15 Lloyds Avenue, Carlingford

DISCLAIMER:

PLANS SHOWN ARE FOR MARKETING PURPOSES ONLY, ALL DIMENSIONS ARE APPROXIMATE AND NOT TO SCALE. THEY ARE SUBJECT TO ERRORS AND INACCURACIES AND NO LIABILITY WILL BE ACCEPTED. INTERESTED PARTIES SHOULD MAKE THEIR OWN INQUIRES.