






11/280-286 Park Road Berala NSW

3  3  2 

Inspection by appointment only

Situated in a secure complex only moments from Berala & Lidcombe CBDs, Train Stations, local schools and shops, this immaculately presented and well maintained 3 Bedroom townhouse with practical floor layout offers you both lifestyle and all conveniences

Main Features:

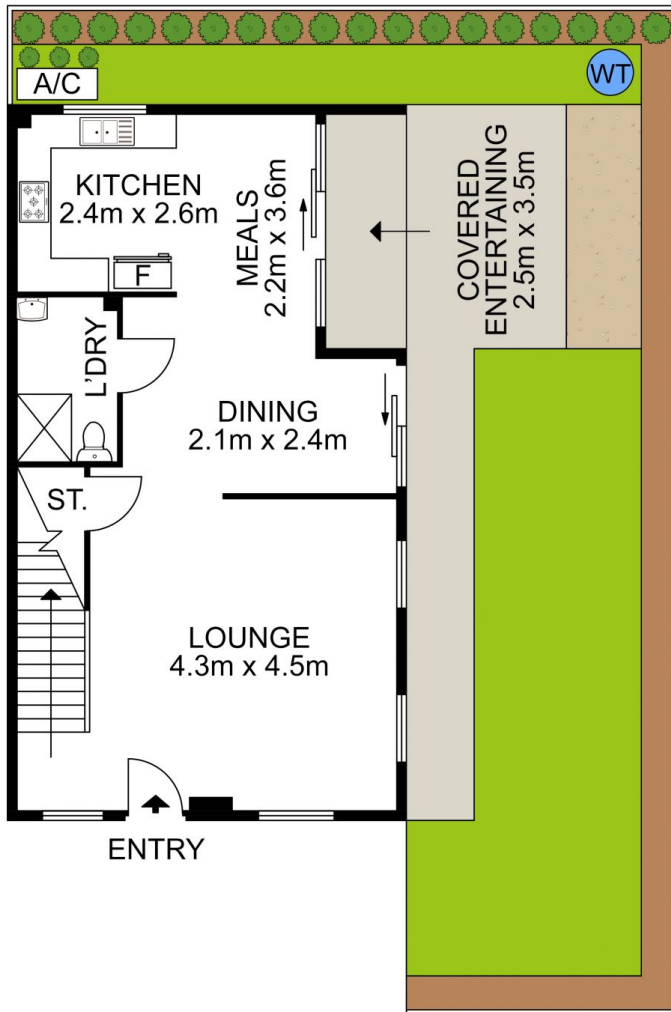
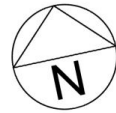
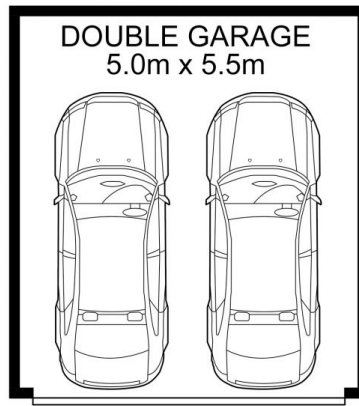
- * Quietly situated in a corner position in small complex
- * Large three bedrooms all with wardrobes and east facing windows, Master with En-suite
- * Contemporary gas kitchen with quality appliances and stone benchtop
- * Spacious living area adjoining a separate dining area
- * Modern Main bathroom with floor to ceiling tiled

Price : \$ 781,000

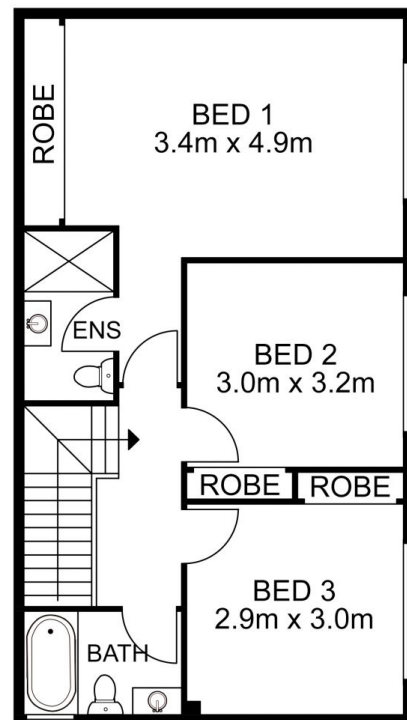
View : <https://www.uniland.com.au/sale/nsw/parramatta/berala/residential/townhouse/6496011>



Andy Lin
02 9869 7788



GROUND FLOOR



FIRST FLOOR

11/280-286 Park Road, Berala

DISCLAIMER:

PLANS SHOWN ARE FOR MARKETING PURPOSES ONLY, ALL DIMENSIONS ARE APPROXIMATE AND NOT TO SCALE. THEY ARE SUBJECT TO ERRORS AND INACCURACIES AND NO LIABILITY WILL BE ACCEPTED. INTERESTED PARTIES SHOULD MAKE THEIR OWN INQUIRES.

