



3/14-16 Henry Street Guildford NSW

3  **2**  **2** 

Ideally situated in a small complex with easy access to transport, shops and schools, this updated and well-maintained 3-bedroom townhouse enjoys the proportions of a large stand-alone residence and is perfect for first home buyers, growing families or astute investors

Price : \$ 708,000

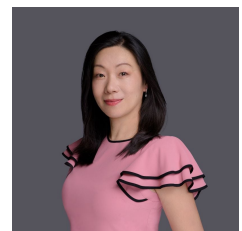
View : <https://www.uniland.com.au/sale/nsw/parramatta/guildford/residential/townhouse/6476130>

Main Features

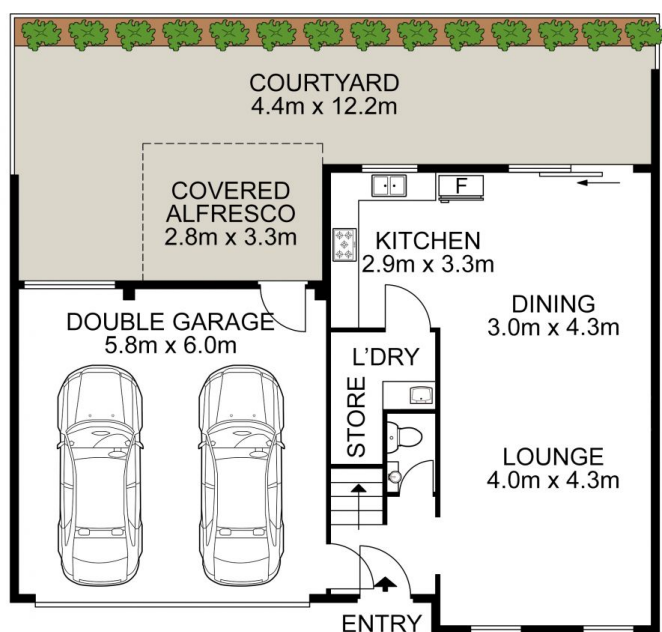
- Spacious 3 bedrooms all with built in wardrobe, master with En-suite
- Sun-drenched open plan living and dining area flowing seamlessly onto the paved courtyard
- Contemporary gas kitchen with quality appliances and stone benchtop
- Stylish and spacious main bathroom with separate shower and tub and floor to ceiling tiled
- 3rd /guest toilet downstairs



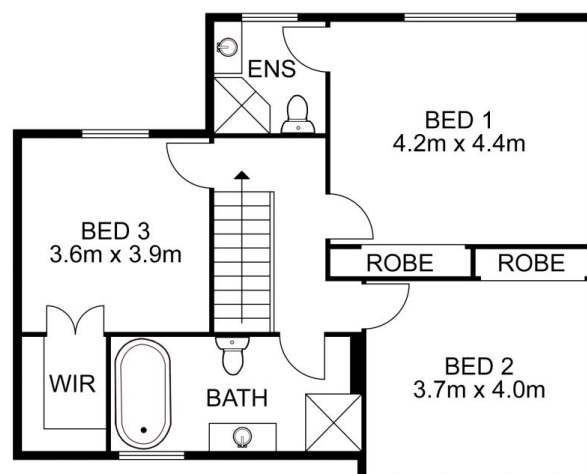
Andy Lin
02 9869 7788



Julie Zhang
02 9869 7788



ENTRY LEVEL



UPPER LEVEL

3/14-16 Henry Street, Guildford

DISCLAIMER:

PLANS SHOWN ARE FOR MARKETING PURPOSES ONLY, ALL DIMENSIONS ARE APPROXIMATE AND NOT TO SCALE. THEY ARE SUBJECT TO ERRORS AND INACCURACIES AND NO LIABILITY WILL BE ACCEPTED. INTERESTED PARTIES SHOULD MAKE THEIR OWN INQUIRES.

